

How to Replace the Bulb of an LCD Video Projector

By Jane Rhoades

Epson Powerlite 820p

Unplug and cool your projector before changing the bulb.

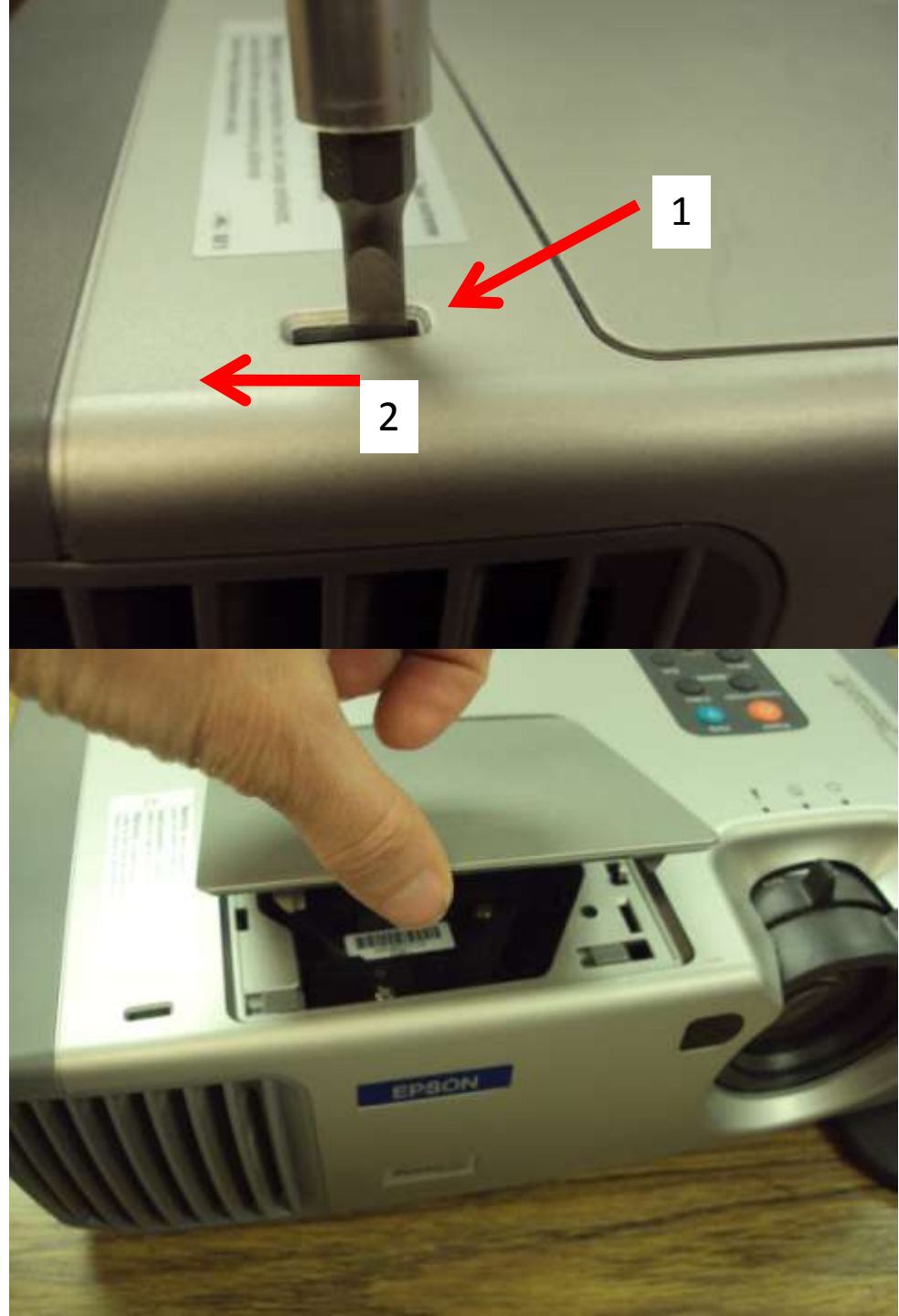
Position your projector so that you can access the recessed bulb cavity.



Gently insert a flat-head screwdriver (or other thin tool) into the recessed slot. Slide the latch to the left.

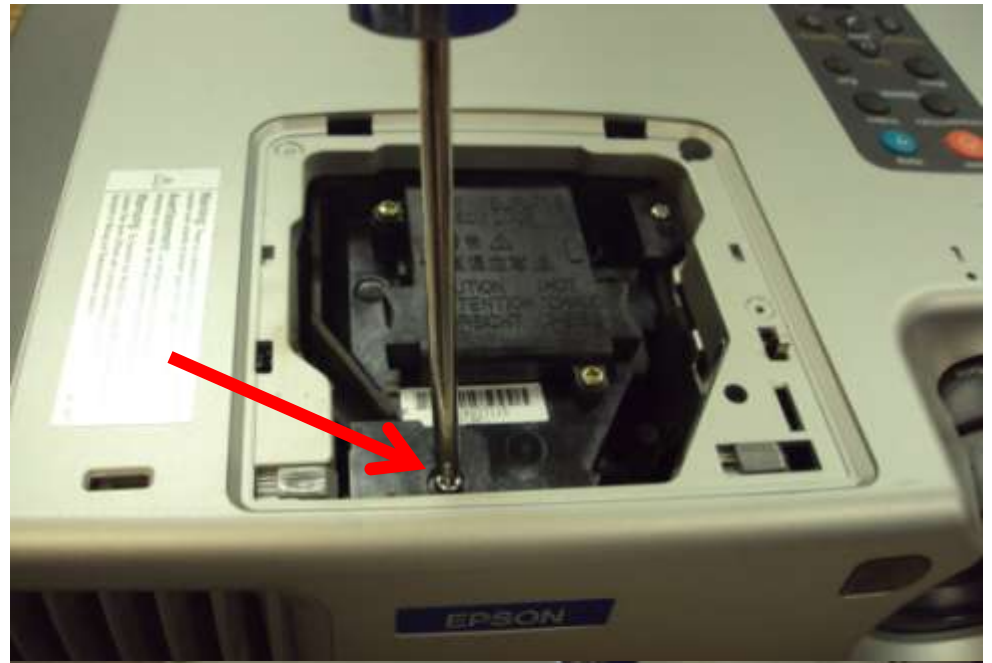
The released cover exposes the lamp assembly.

Set cover aside.

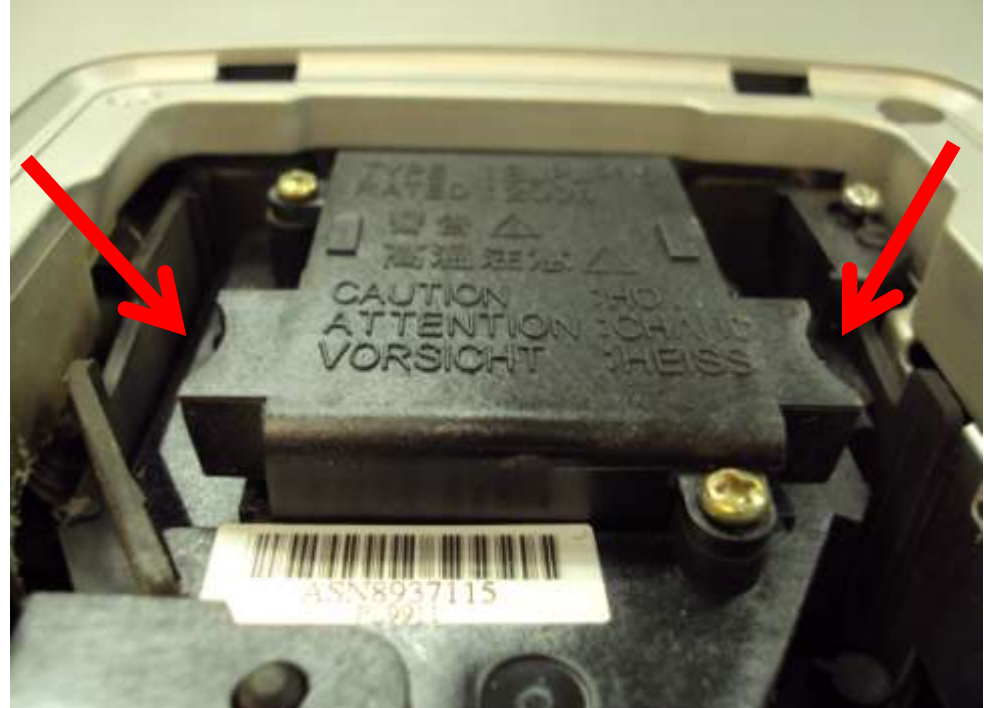


Locate the 2 **silver** screws holding the lamp.

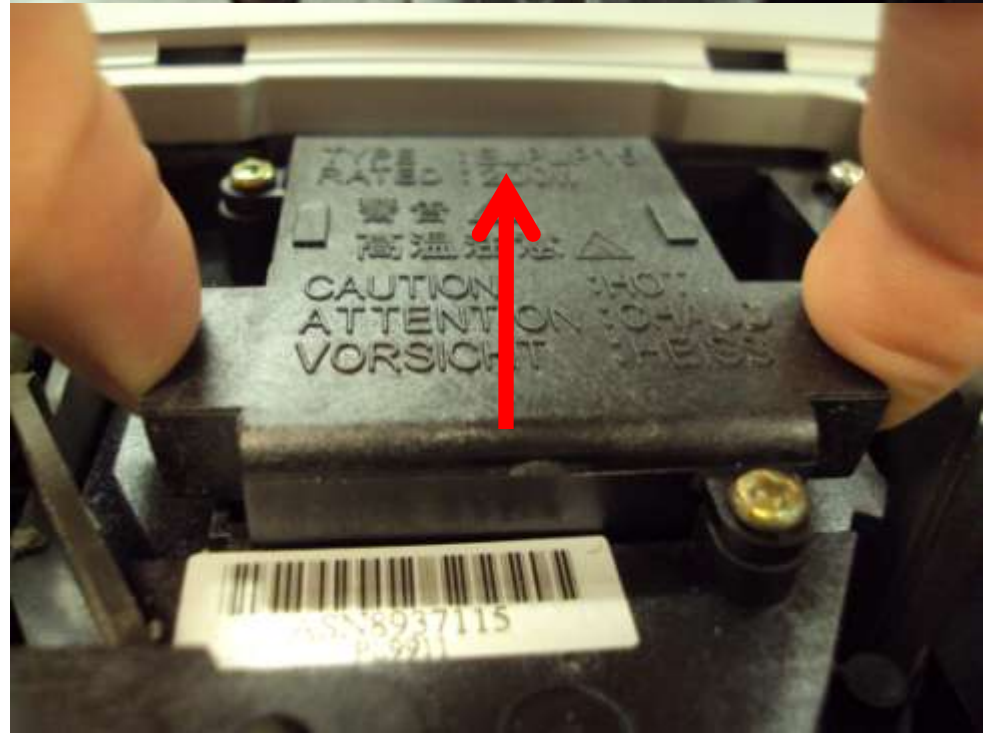
Use a Phillips-head screwdriver to loosen these 2 screws only. They will not fully remove.



Locate the two finger holds on either side at the top of the lamp unit.



Grasp firmly and gently pull the assembly straight up and out.



Insert the replacement bulb making sure not to touch the bulb itself.

Tighten the silver screws to hold it in place.

Replace the cover. Gently push down to snap it closed.







Plug the projector in and test the bulb.

Remember the projector will not work if the cover is not secured.



With the unit turned on, reset the lamp-life timer using either the menu settings on top of the unit or on the remote.

Press Menu, then , Highlight **About**, Press  to choose “Reset Lamp Timer” Press  again. Select “Yes” to confirm choice. Press . Press ESC to finish.

