

SETTING UP AND USING AN LED PROJECTOR WITH A VARIETY OF INPUT DEVICES

Equipment:

Samsung DVD V6700 - DVD/VCR combo



Composite video/audio cable



Sharp Notevision PG-F200X - DLP projector



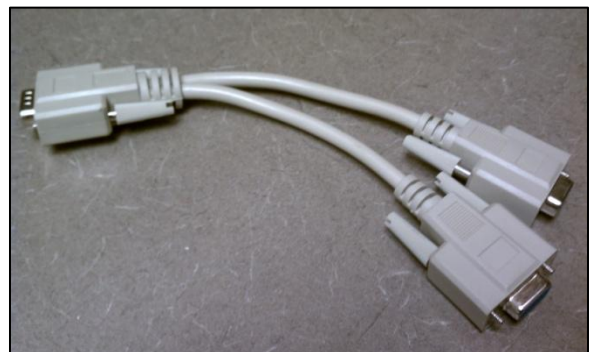
VGA cable



External PC speakers



VGA Y-cable



CONNECTING THE PROJECTOR TO A VHS/DVD PLAYER

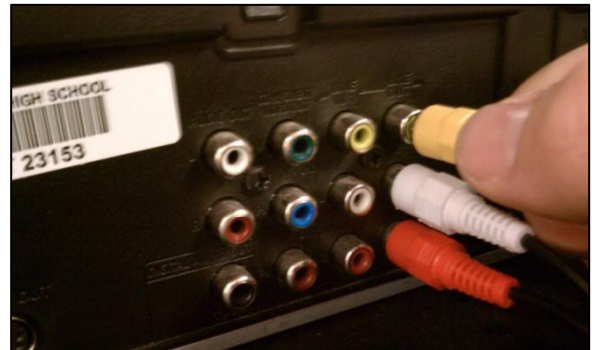
Locate the media connections panel on the projector.



Locate the media connections panel on the VHS/DVD player.



Using the composite video/audio cable, connect the cable to the video out ports labeled LINE OUT on the VHS/DVD player following the color coding provided.
[red – right audio out, white – left audio out, yellow – video out]



Using the opposite end of the composite cable, connect the cable to the ports on the projector, following the same color scheme guidelines.



CONNECTING THE PROJECTOR TO A COMPUTER

Locate the media connections panel on the projector.



Disconnect the VGA monitor cable from the back of the PC after carefully unscrewing the cable.



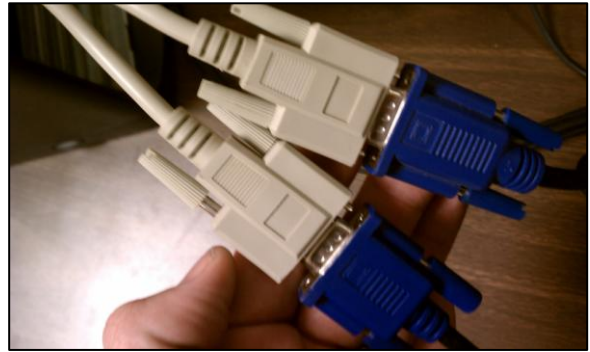
Using a passive VGA Y-cable (splitter), connect the single end to the monitor port on the back of the PC. (This allows the video to be displayed on the desktop monitor as well.)



Connect the end of the VGA monitor cable to one end of the splitter.



Using a VGA cable, connect one end to the other end of the splitter.



Connect the other end of the VGA cable to the port on the projector labeled COMPUTER/COMPONENT. Carefully tighten the screws. Do not over tighten the screws.



CONNECTING THE PROJECTOR TO EXTERNAL SPEAKERS

Locate the media connections panel on the projector.



Connect the light green 3.5mm cable from the speakers to the port labeled AUDIO OUT.



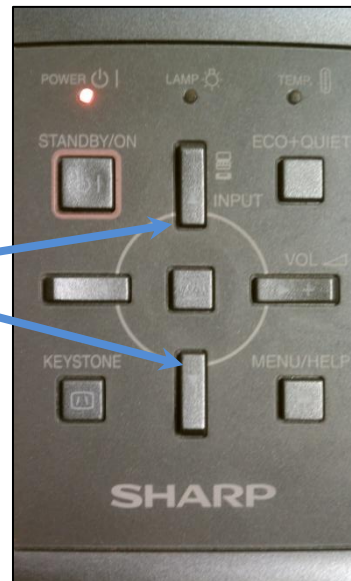
USING THE PROJECTOR

Turn on the selected input source.

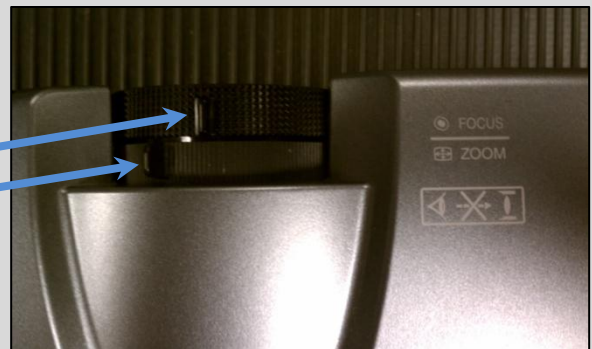
Turn on the projector using the power button on the top of the projector.



Select the input source using the buttons on top of the projector.



Adjust the image projected by using the focus and zoom controls on the front of the projector.



TROUBLESHOOTING

Check all cable connections. Be sure each cable is completely connected.

Verify the selected input source. With multiple input devices connected, be sure that the desired source is selected.