

Group 1: Leigh-Ann Hunt, Mary Beth Holcomb, & Katie Mitchell

HOW TO SET UP/USE AN LED PROJECTOR WITH A COMPUTER AND VCR/DVD PLAYER (and SPEAKER)

LED PROJECTOR: Sharp PG B10S Notevision Projector



COMPUTER: IBM Thinkpad R50



Group 1: Leigh-Ann Hunt, Mary Beth Holcomb, & Katie Mitchell

VCR/DVD PLAYER: Panasonic, Model # PV-V4523S

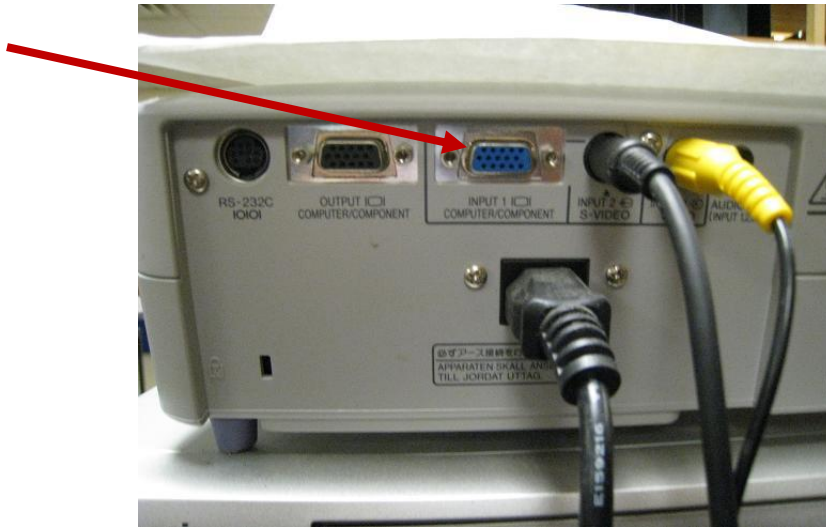


SPEAKER: Califone PA-300



LED PROJECTOR & COMPUTER

Step 1: Locate the cable plug-ins on the back of the projector, and find the computer component cable plug-in (Input 1).

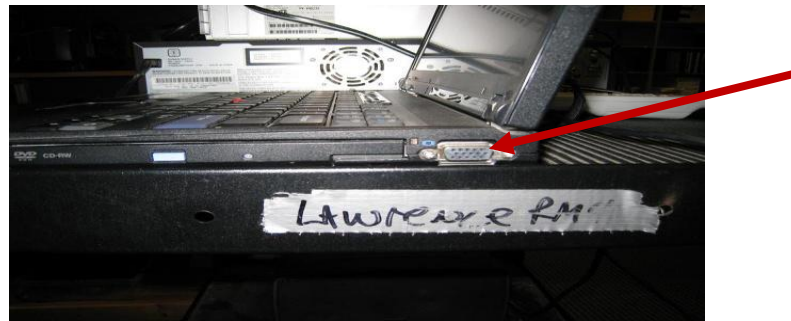


Step 2: Plug the computer cable into the projector, tightening the screws to secure it in place.



Group 1: Leigh-Ann Hunt, Mary Beth Holcomb, & Katie Mitchell

Step 3: Locate the port for the same plug on the computer.



Step 4: Plug the other end of the cord into the computer.



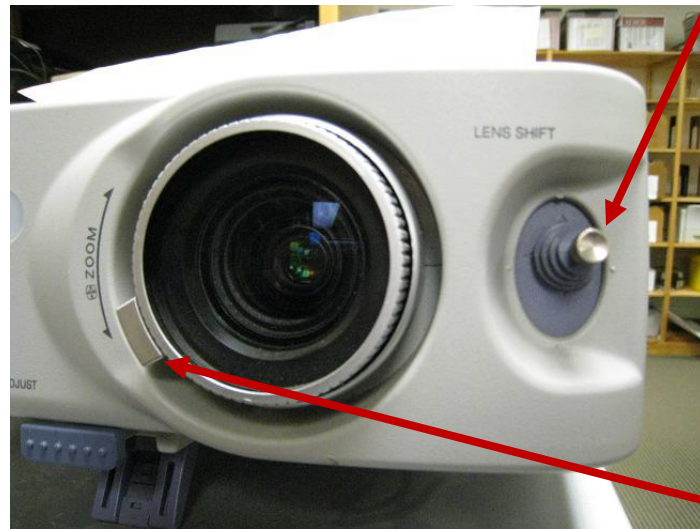
Step 5: Turn the LED projector and the computer on. Through either the projector remote or the controls on the projector itself, select the input device to be used (computer).

INPUT



Group 1: Leigh-Ann Hunt, Mary Beth Holcomb, & Katie Mitchell

Step 6: Use the computer controls to display items on the screen.
Use the lens shift and focus controls on the projector to adjust the picture.



LENS SHIFT

ZOOM

LED PROJECTOR & VCR/DVD PLAYER (with SPEAKER)

Step 1: Locate a video input port on the back of the projector. (In this photo, the plug is already in place.)



NOTE: You will be using an A/V cable with red, white, and yellow plugs at each end. The yellow is for video input, and the red and white plugs are for sound.

Step 2: Taking the set of plugs on one side of the cable, plug the yellow piece into the video input port on the projector.

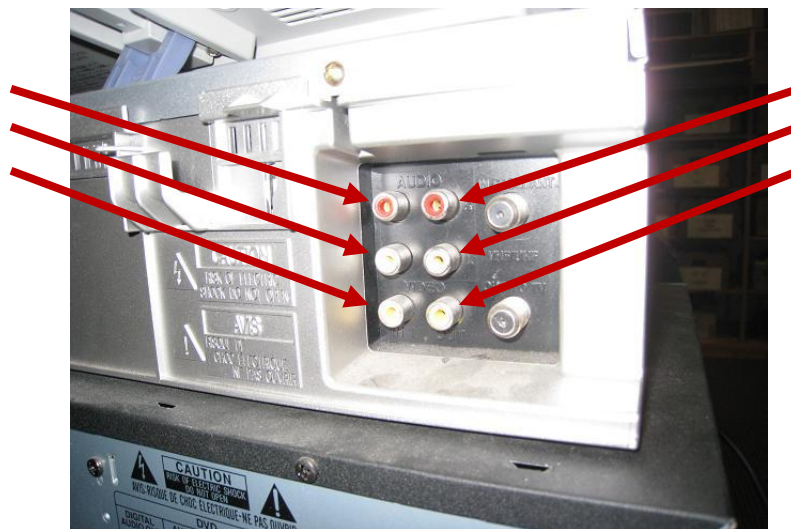


Group 1: Leigh-Ann Hunt, Mary Beth Holcomb, & Katie Mitchell

Step 3: Locate the ports on the back of the speaker. Plug the remaining pieces (red and white) into the corresponding ports on the back of the speaker.



Step 4: Locate the ports on the back of the VCR/DVD Player.

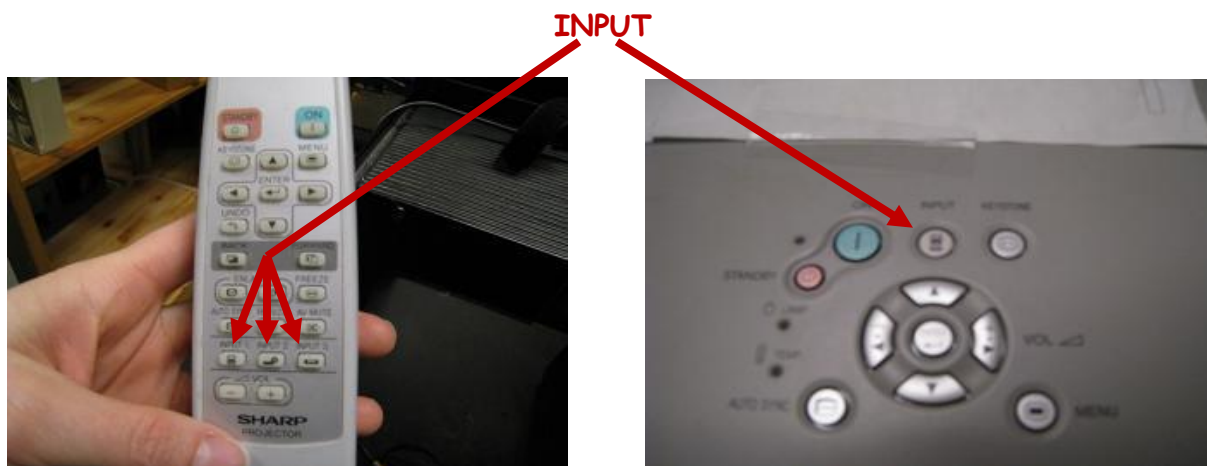


Group 1: Leigh-Ann Hunt, Mary Beth Holcomb, & Katie Mitchell

Step 5: Plug the other end of the cable (red, white, and yellow pieces) into the back of the VCR/DVD Player at the corresponding ports.

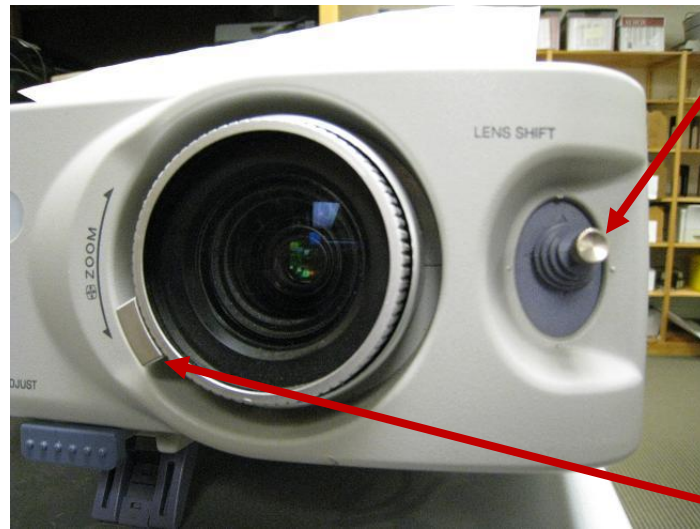


Step 6: Turn the LED projector, the VCR/DVD player, and the speaker on. Through either the projector remote or the controls on the projector itself, select the input device(s) to be used (VCR/DVD player & speaker).



Group 1: Leigh-Ann Hunt, Mary Beth Holcomb, & Katie Mitchell

Step 7: Use the VCR/DVD player controls to display items on the screen. Use the lens shift and focus controls on the projector to adjust the picture.



LENS SHIFT

ZOOM