

NEC MT1060 Projector - Replace the Lamp

Before You Begin

Turn the projector off and unplug the power supply.

Wait at least one hour after using the projector before you replace the lamp.

Supplies needed:

Flat head screwdriver

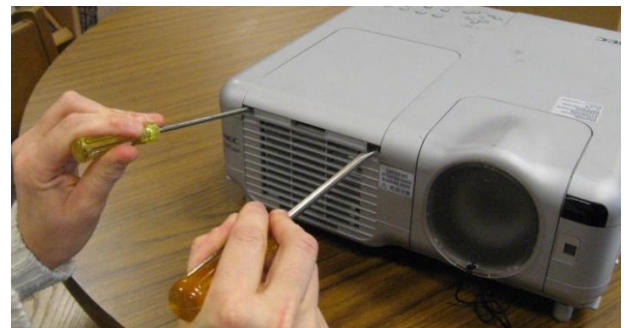
Replacement lamp (Part #MT60LP) **OR** Optional extended life lamp (Part #MT60LPS)

Step 1 - Remove Lamp Cover

There are two grooves located on the side of the lamp cover.



Push in the two grooves with a flat head screwdriver.

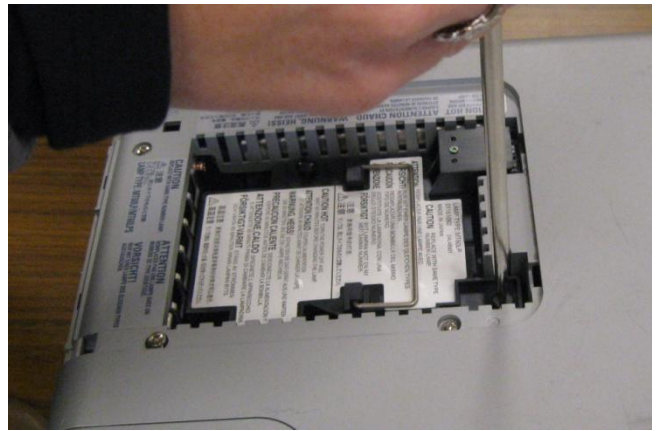
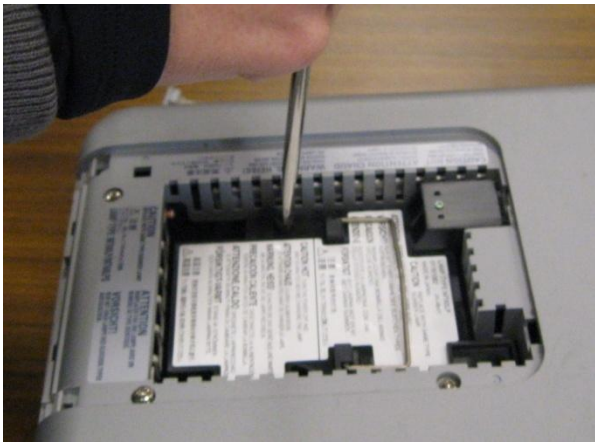


Gently lift off the cover.



Step 2 - Loosen Screws

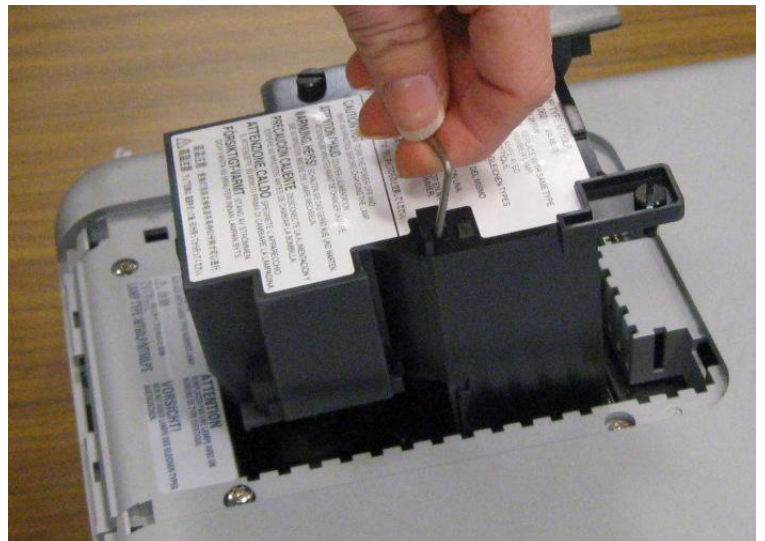
Loosen the two screws on the lamp unit. Do not remove any other screws.



Step 3 - Remove Lamp Unit

There is a silver handle on the lamp unit.

Pull the handle up to remove the old lamp unit.



Step 4 – Insert New Lamp Unit

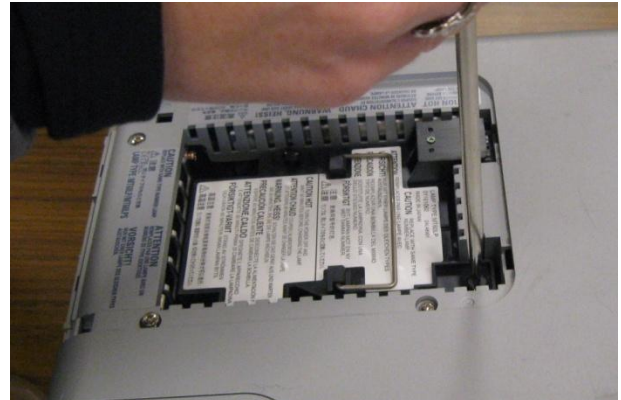
Insert the new lamp unit.

Be sure it is pushed all the way in.



Step 5 – Secure with Screws

Secure the new lamp unit with the two screws. Tighten the screws.



Step 6 – Replace Lamp Cover

Slide the lamp cover back on.

Be sure the cover snaps closed.

