

CONNECTING AN INTERACTIVE STUDENT RESPONSE SYSTEM TO AN LCD PROJECTOR

CPS response system to a Hitachi CP-X265 LCD Projector

SETUP

Connect the projector to the computer using a VGA cable. Make sure the cable is plugged in to the “RGB In” spot.



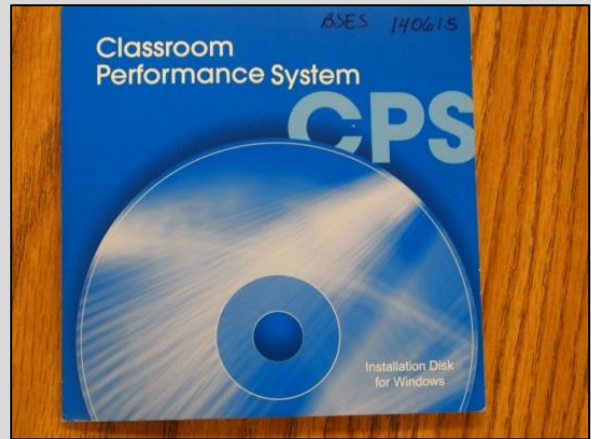
The other end will connect to the “RGB Out” spot on the computer.



Plug the projector's power cord into an electrical outlet.

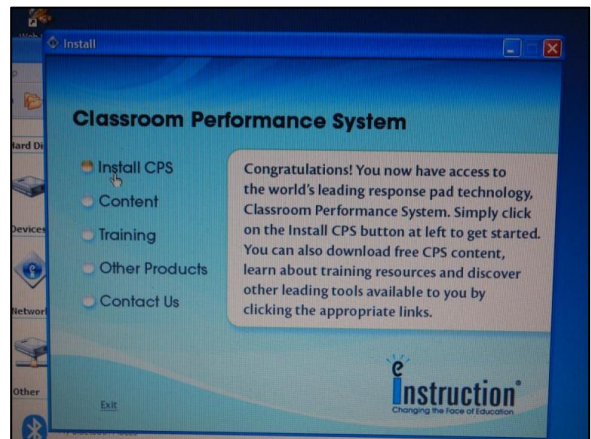
An Interactive Whiteboard is not necessary.

Make sure the response system software is installed on the computer. If not, install it using the Installation Disk.



Insert the CD into the CD-Rom drive and an installation menu will pop up. Click "Install CPS" and follow the installation prompts.

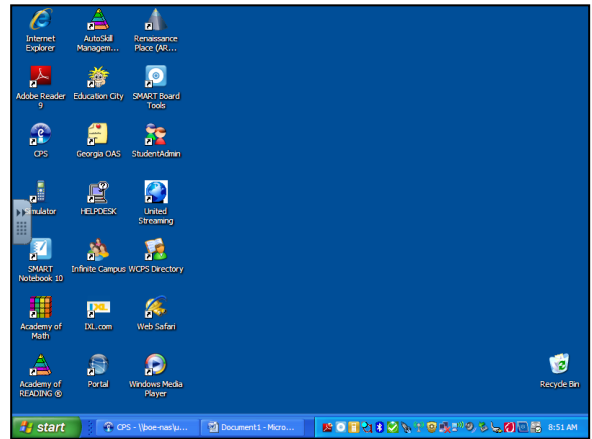
If the menu does not automatically appear, open it manually by going to "My Computer" and clicking on the CD drive.



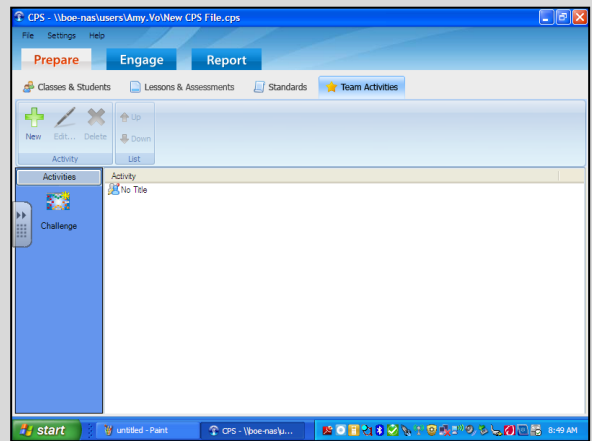
Connect the Remote Sensor to the computer using the provided USB cable.



Open the CPS software by **double-clicking on the “CPS” icon** on the desktop. If it is not on the desktop, find it in the programs list in the **start menu**.



Once the program is open, you are ready to create a file or game to use with your students.



After you have created an activity, give each student or group a clicker and you are ready to begin.

